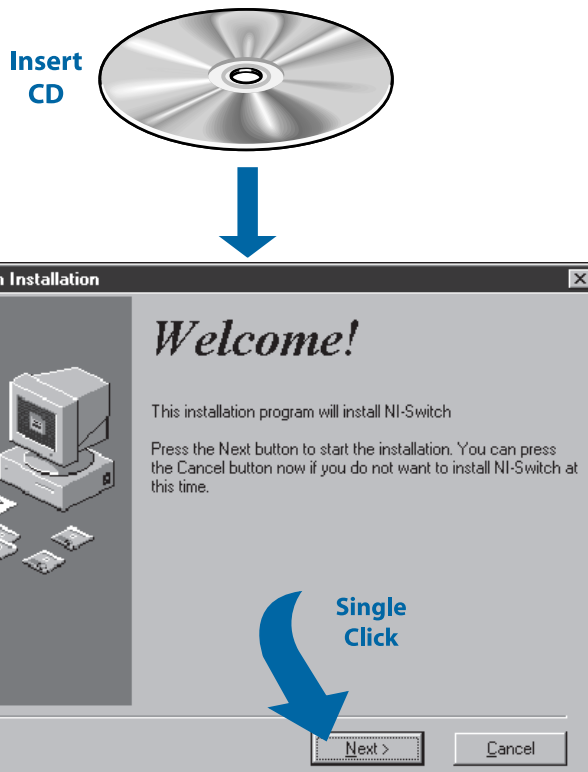


Set up and Test Your NI 2590

1 Install Your Software



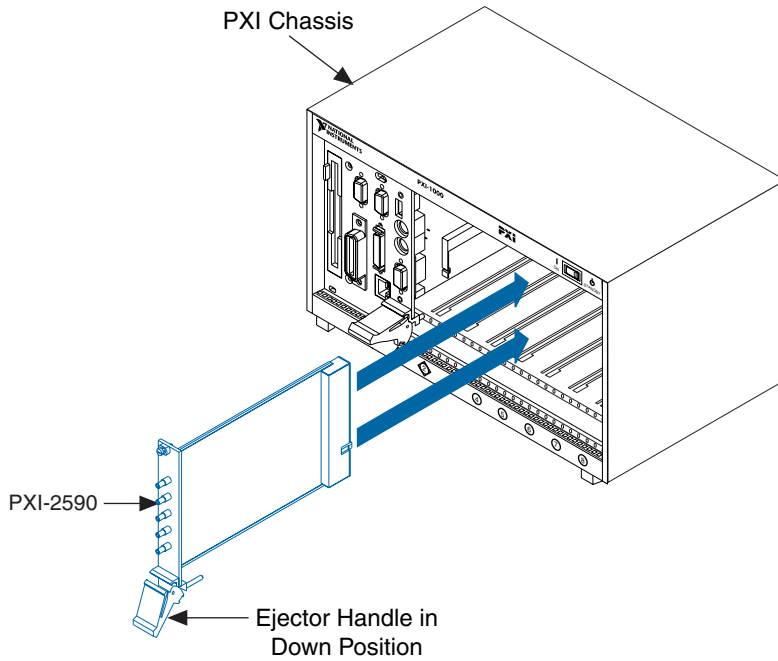
2

Install Your NI 2590



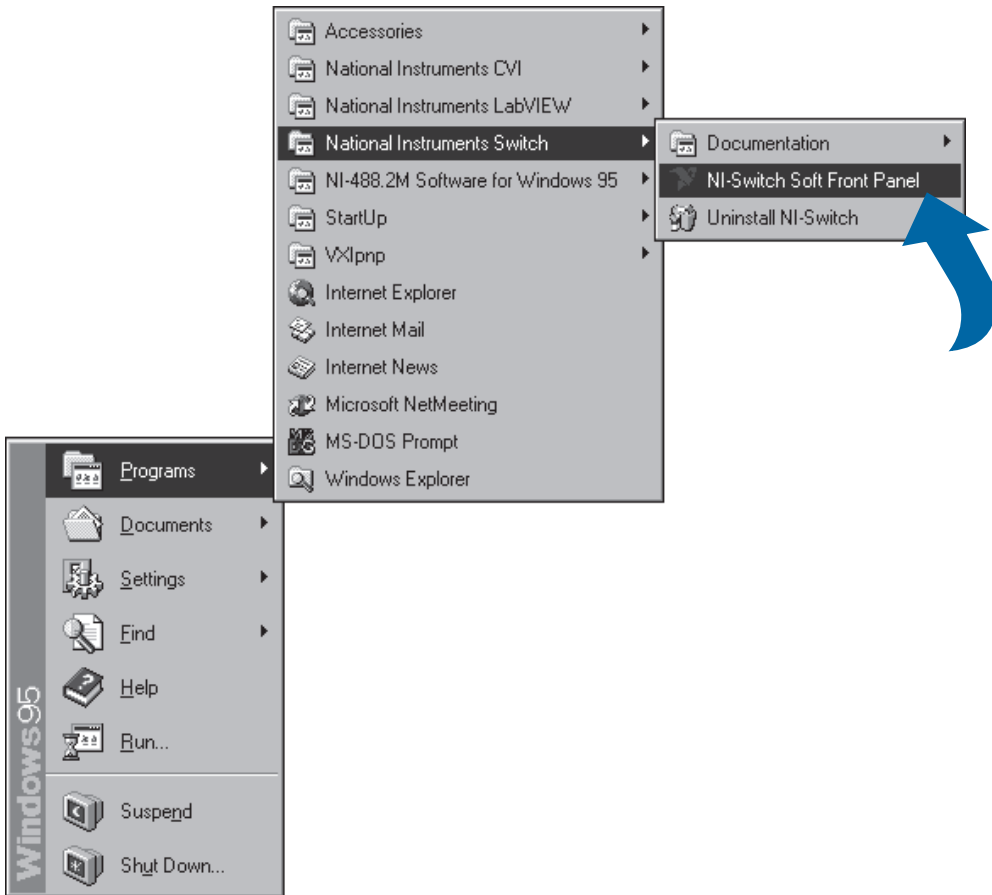
Caution

Turn the power off before installing your hardware.

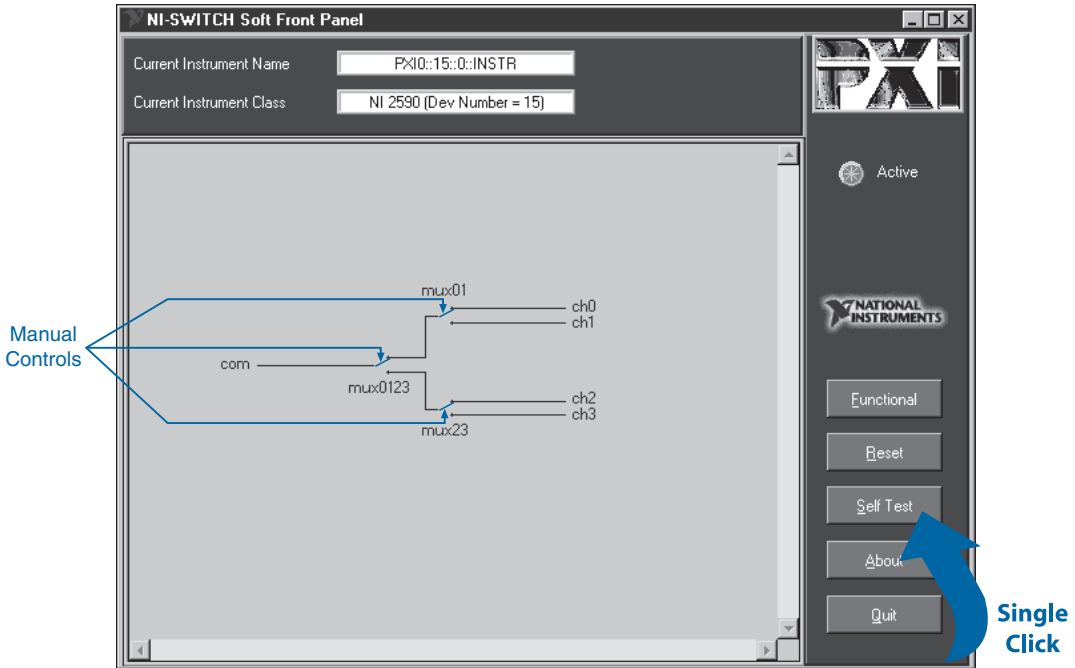


3

Run the Soft Front Panel



4 Run the Self-Test



Run the Self Test by clicking the Self Test button on the soft front panel.

After running the Self Test, you can check the relays by clicking on the manual switch controls on the soft front panel. You will hear a click as the relay switches, and the control will indicate the position of the relay. To verify the switch position, use a continuity tester on the front panel connectors.

